

 THE FUTURE IS NOW



SHERLOCK NDT

Touchscreen Software for Digital Radiography



TELEDYNE ICM
Everywhere you look™

Part of the Teledyne Imaging Group

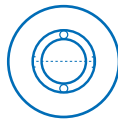
See the unseen. At your fingertips.



AUTO ISRB



REAL-TIME VIDEO
RECORDING



AUTO PIPE WALL
MEASUREMENT



IMAGE EDITING



TELEDYNE FILTER



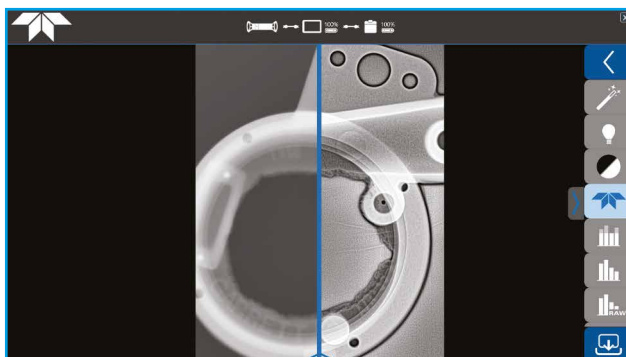
PLUG AND PLAY



iSRb calculation and automatic ISI recognition



Wall thickness measurement



Without Teledyne Filter

With Teledyne Filter

FACILITATE YOUR X-RAY INSPECTIONS

Sherlock NDT is a software solution that has been designed and developed by Teledyne ICM for on-the-field NDT inspections.

It is the perfect tool for industrial radiography, allowing compliancy with most quality standards. The intuitive and user friendly touchscreen software produces high quality images, allows real-time (video) acquisition, and comes with many different enhancement features.

Sherlock NDT is delivered with our Go-Scan detectors standard packages and works best combined with our CP Series generators.

FEATURES

All-in-one
Image editing
ADRC dynamic filter
Local contrast enhancement
Teledyne filter
Histogram equalization
DICONDE Compliant
Emboss
Black & white
Pseudo-colours
Smart measurement tool
SNR
Greyscale feature
iSRb / automatic IQI recognition
Annotation / Highlight
Mirroring / Rotation
Pixel map edition
Real-time Image acquisition
Exposure time calculator
Wall thickness measurement
Interconnected by cable or wifi
Monitoring and modifying parameters during inspection
During the inspection, possibility to adapt parameters and apply filters
Superpower Zoom (up to 500%)

All specifications are non contractual and subject to change without prior notice.

TELEDYNE ICM

Zoning Les Plennes / Rue Du Progrès 3 / B-4821 Andrimont (Dison) - Belgium

+32 (0)87 44 01 50 / icm.sales@teledyne.com



TELEDYNE ICM
Everywhereyoulook™

Part of the Teledyne Imaging Group